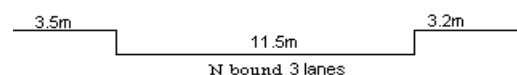
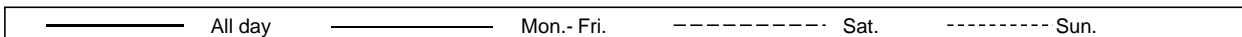
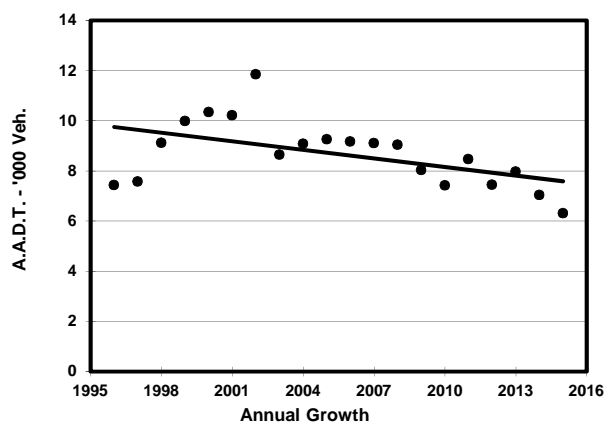
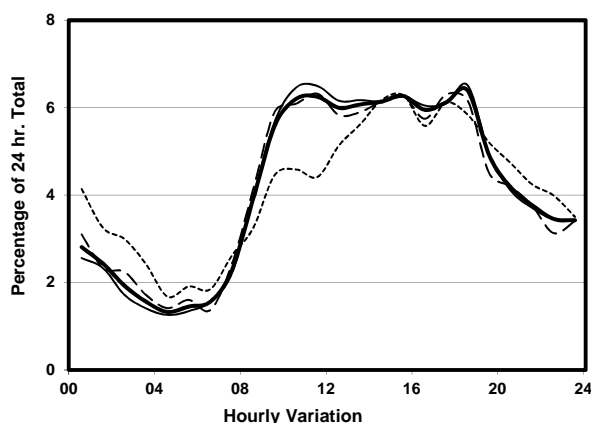
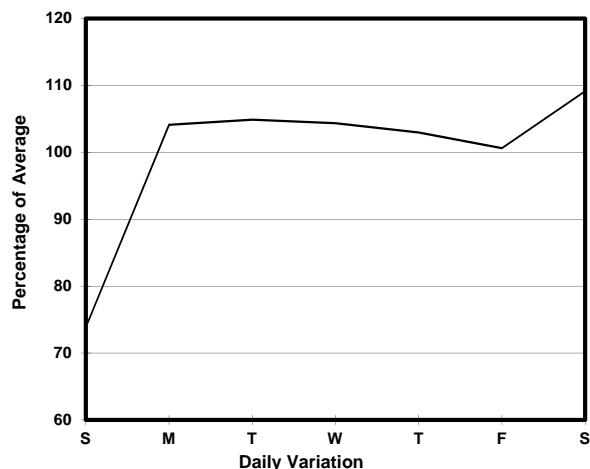
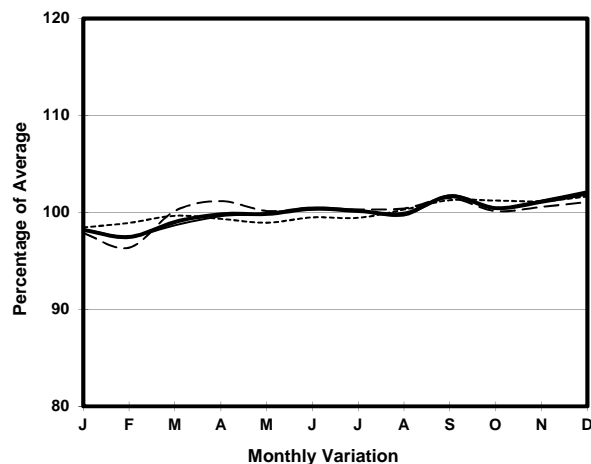


YEAR 2015  
 LINK RECLAMATION ST (from PUBLIC SQUARE ST to ARGYLE ST)  
 COVERAGE (B) STATION 4210  
 ROAD NETWORK MAJOR  
 ROAD TYPE LOCAL DISTRIBUTOR



## 1. TRAFFIC FLOW VARIATION AND GROWTH



## 2. TRAFFIC CHARACTERISTICS (BY DIRECTION)

Parameter	All - Day	Mon. - Fri.	Sat.	Sun.
<b>NORTH BOUND</b>				
A.A.D.T.	6310	6620	6990	4720
R 12 / 24 - %	67.2	68.2	67.2	60.1
R 16 / 24 - %	83.5	84.4	82.8	78.3
AM Peak Hour	0900-1000	0900-1000	0900-1000	0900-1000
One-way flow at AM peak hour	350	380	410	210
T - % (AM)	-	6.4	-	-
PM Peak Hour	1800-1900	1800-1900	1700-1800	1700-1800
One-way flow at PM peak hour	400	430	440	290
T - % (PM)	-	3.5	-	-
Prop.of commercial vehicles - 16 hr.	-	4.6	-	-
 A.A.D.T.	-	-	-	-
R 12 / 24 - %	-	-	-	-
R 16 / 24 - %	-	-	-	-
AM Peak Hour	-	-	-	-
One-way flow at AM peak hour	-	-	-	-
T - % (AM)	-	-	-	-
PM Peak Hour	-	-	-	-
One-way flow at PM peak hour	-	-	-	-
T - % (PM)	-	-	-	-
Prop.of commercial vehicles - 16 hr.	-	-	-	-

## 3. OTHER INFORMATION AND COMMENT

**Coverage (B) Station 4210**  
**Year 2015**

**4. Vehicle classification and occupancy - Monday to Friday**

Time		Class of vehicle									
		Motor	Private	Taxi	Private	PLB	Goods veh.		Non	Fr. Bus	
		Cycle	Car		LB		Light	M & H	Fr. Bus	SD	DD
0700-0800	Pro	2.6	17.9	25.6	0.0	2.6	35.9	15.4	0.0	0.0	0.0
	Ocp	1.0	1.6	1.9	0.0	2.0	1.4	1.2	0.0	0.0	0.0
0800-0900	Pro	7.8	16.9	18.2	0.0	1.3	48.1	6.5	1.3	0.0	0.0
	Ocp	1.0	1.1	1.9	0.0	2.0	1.3	1.2	2.0	0.0	0.0
0900-1000	Pro	4.6	22.0	16.5	0.0	0.9	49.5	6.4	0.0	0.0	0.0
	Ocp	1.0	1.2	1.4	0.0	2.0	1.6	1.4	0.0	0.0	0.0
1000-1100	Pro	4.1	24.1	18.6	0.0	1.4	42.1	9.0	0.7	0.0	0.0
	Ocp	1.2	1.7	1.7	0.0	7.0	1.3	1.9	1.0	0.0	0.0
1100-1200	Pro	6.4	30.3	12.8	0.0	0.9	45.0	4.6	0.0	0.0	0.0
	Ocp	1.1	1.4	1.9	0.0	6.0	1.6	1.2	0.0	0.0	0.0
1200-1300	Pro	9.4	21.4	15.4	0.0	1.7	47.9	3.4	0.9	0.0	0.0
	Ocp	1.0	1.4	1.7	0.0	8.0	1.6	1.8	1.0	0.0	0.0
1300-1400	Pro	3.5	31.9	10.6	0.9	2.7	47.8	2.7	0.0	0.0	0.0
	Ocp	1.0	1.7	1.4	1.0	5.7	1.6	1.3	0.0	0.0	0.0
1400-1500	Pro	4.1	23.5	14.3	0.0	2.0	51.0	5.1	0.0	0.0	0.0
	Ocp	1.3	1.3	1.9	0.0	15.0	1.6	1.6	0.0	0.0	0.0
1500-1600	Pro	2.6	31.3	14.8	0.9	2.6	44.3	3.5	0.0	0.0	0.0
	Ocp	1.0	1.4	2.0	1.0	10.0	1.5	1.0	0.0	0.0	0.0
1600-1700	Pro	5.9	38.6	7.9	0.0	2.0	40.6	5.0	0.0	0.0	0.0
	Ocp	1.0	1.4	2.4	0.0	13.0	1.3	1.4	0.0	0.0	0.0
1700-1800	Pro	13.0	46.0	14.0	0.0	5.0	22.0	0.0	0.0	0.0	0.0
	Ocp	1.2	1.5	2.1	0.0	6.6	1.4	0.0	0.0	0.0	0.0
1800-1900 Peak hour	Pro	4.7	39.5	19.8	1.2	8.1	23.3	2.3	1.2	0.0	0.0
	Ocp	1.0	1.4	2.5	5.0	5.6	1.4	1.0	45.0	0.0	0.0
1900-2000	Pro	9.5	37.8	25.7	0.0	10.8	16.2	0.0	0.0	0.0	0.0
	Ocp	1.1	1.6	1.5	0.0	4.6	1.8	0.0	0.0	0.0	0.0
2000-2100	Pro	1.6	33.9	38.7	0.0	16.1	8.1	1.6	0.0	0.0	0.0
	Ocp	1.0	1.4	1.8	0.0	5.7	1.8	1.0	0.0	0.0	0.0
2100-2200	Pro	5.2	37.9	29.3	0.0	12.1	12.1	3.4	0.0	0.0	0.0
	Ocp	1.3	1.8	1.6	0.0	9.3	1.1	1.0	0.0	0.0	0.0
2200-2300	Pro	3.9	41.2	27.5	0.0	13.7	11.8	2.0	0.0	0.0	0.0
	Ocp	1.0	1.6	2.1	0.0	10.7	2.0	1.0	0.0	0.0	0.0
16 hours	Pro	5.7	30.5	17.7	0.2	4.3	37.1	4.3	0.3	0.0	0.0
	Ocp	1.1	1.5	1.8	2.3	7.3	1.5	1.4	12.3	0.0	0.0

**Legend**

**Pro.** Proportion of vehicles in % (Sum may not add up to 100% due to figure rounding)\*

**Ocp.** Average occupancy of vehicles including both driver and passengers\*

**M&H** Medium and Heavy

\* All traffic data are collected from combined bounds except for one way traffic